

Bibliometric source

- **Web of science (status 1 February 2010)**
- **Period 1960-2009**
- **Search in "topic" using the string:**
 - *dendrochronolog** OR *annual ring** OR *tree-ring** OR *tree ring** OR *dendroarchaeolog** OR *dendroclimatolog** OR *dendroecolog** OR *dendrogeomorpholog** OR *dendroglaciolog** OR *dendrohydrolog** OR *dendropyrochronolog** OR *dendroentomolog**
- **Considered all peer-reviewed papers**
 - *Articles (4448)*
 - *Proceedings papers (403)*
 - *Reviews (163)*
 - ➔ **Total of 5014 contributions**

Subfields

- **Anatomy related papers**
 - *Abstract encoding either "anatomy, tracheid, vessel, lumen, wall, cambium, phloem, compression"*
- **Isotopes related papers**
 - *Abstract encoding either "isotop", delta, carbon, oxygen, stable, cellulose, hydrogen"*

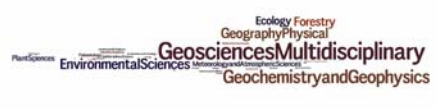
Word clouds

All papers

Isotopes

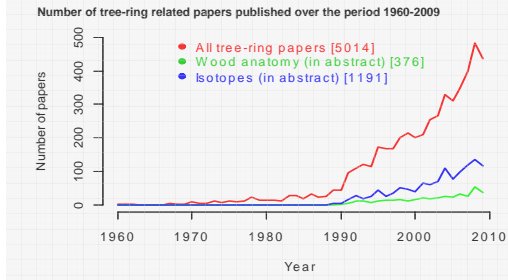
Anatomy

Subject
Journal
Country
Institution
Author



Year	Papers	Authors	References	Yearly Citations	Pages	Countries	Journals	Subjects
2009	437	4.1	62.7	0.5	11.4	54	177	58
2008	493	3.9	61.1	1.1	11.5	55	181	56
2007	399	3.9	45.0	1.5	11.2	53	173	56
2006	347	3.6	48.2	1.8	11.2	42	158	53
2005	310	3.7	45.6	2.4	11.3	47	149	50
2004	330	3.7	46.3	3.3	11.5	44	149	55
2003	186	3.2	47.2	2.3	11.7	41	134	56
2002	254	3.4	48.9	2.7	12.3	41	117	44
2001	211	3.3	43.7	2.6	11.1	42	113	38
2000	201	3.0	40.1	2.4	11.1	41	114	46
1999	214	3.0	43.9	2.1	11.4	43	112	45
1998	200	3.2	37.1	4.0	10.8	42	111	49
1997	167	2.9	37.9	2.1	10.0	27	91	44
1996	168	2.7	38.9	1.5	10.5	24	99	45
1995	172	2.8	31.8	1.8	9.7	26	89	37
1994	115	2.5	30.5	1.5	11.7	20	67	40
1993	121	2.6	27.2	1.5	10.9	17	73	41
1992	109	2.8	28.7	1.3	9.9	20	65	33
1991	98	2.4	27.3	1.3	11.8	12	68	28
1990	45	2.8	24.2	1.2	9.8	10	20	24
1989	45	2.5	29.7	1.3	11.0	14	26	22
1988	26	2.4	24.4	1.2	8.0	12	24	22
1987	23	2.3	28.0	1.0	11.3	5	21	21
1986	32	2.4	19.0	0.7	10.4	10	26	21
1985	18	2.4	24.6	1.1	6.3	5	15	11
1984	29	2.3	19.0	1.7	9.1	10	21	21
1983	28	2.3	17.3	0.6	7.6	8	19	17
1982	12	1.8	20.3	0.9	6.6	5	9	9
1981	16	1.9	21.6	0.8	11.5	2	13	13
1980	14	2.6	15.4	0.8	8.8	4	11	9
1979	13	1.4	15.0	0.9	9.5	6	11	3
1978	24	2.1	13.5	0.6	7.9	6	21	22
1977	12	1.8	27.5	0.6	7.9	6	10	12
1976	9	1.7	11.1	0.9	8.2	6	8	8
1975	11	1.4	19.6	0.3	7.6	7	10	8
1974	6	2.4	23.1	1.3	8.0	4	6	9
1973	11	1.9	20.4	0.3	6.3	6	10	13
1972	5	1.8	13.3	0.2	11.3	5	5	8
1971	5	1.6	8.0	0.2	7.0	1	5	7
1970	10	0	10.0	0	NA	1	1	1
1969	3	3.0	26.7	0.2	NA	1	3	3
1968	2	1.5	13.5	0.0	8.0	2	2	3
1967	4	1.5	12.5	0	NA	1	4	5
1966	1	3.0	29.0	0.8	NA	1	1	2
1965	1	4.0	24.0	1.3	9.0	1	1	1
1964	0	0.0	0.0	0.0	0.0	1	0	0
1963	1	2.0	18.0	0.2	NA	1	1	1
1962	3	1.3	15.3	0.3	7.0	1	3	5
1961	2	3.5	18.0	0.2	NA	1	1	1
1960	2	3.0	6.0	0.5	3.0	1	2	1

Characteristics of tree-ring peer-reviewed papers over the period 1960-2009. "Papers" indicates the total numbers of papers published in a given year; "Authors", "References", "Yearly Citations" and "Pages" refer to the average value per paper. The final three columns indicate the total number of countries, journals and subjects represented in each year.



The clouds give greater prominence to Subjects, Journals, Countries, Institution and Authors that appear more frequently in Tree-ring papers.