

2020

Swiss Federal Research Institute WSL

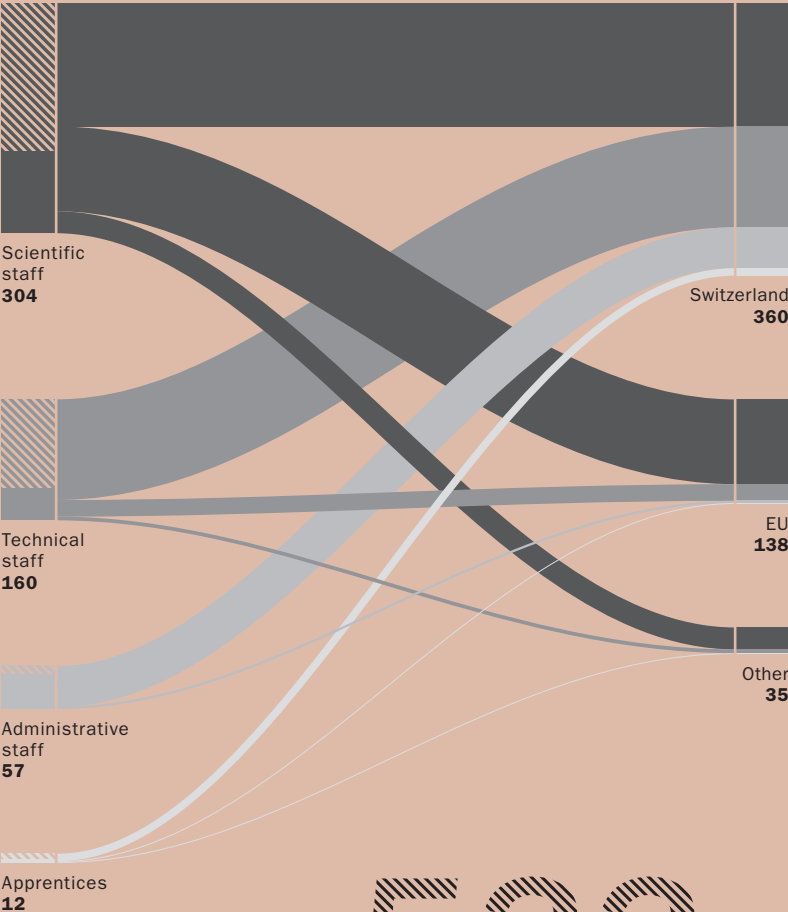
Research for People and the Environment



Staff

Function

Origin



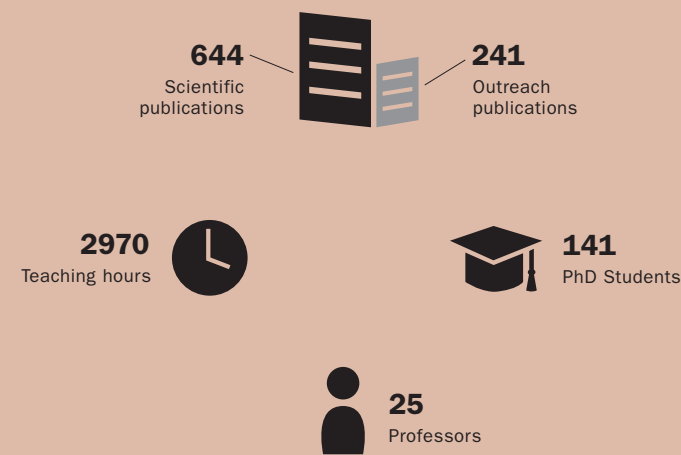
533

Total staff

Men
62 %
Women
38 %

Knowledge

We generate knowledge about the environment via scientific publications, lectures, the magazine DIAGONAL, information material for specialists as well as events and websites.



Finances

Our main funding is in the form of a basic contribution from the federal government, with contributions for research from the Swiss National Science Foundation (SNSF), other foundations and the EU, as well as contracts with state and private entities.



Highlights in 2019



Elected: Two professors and one honorary professor



Informed: "Forum for Knowledge" on extreme events and renewable energies



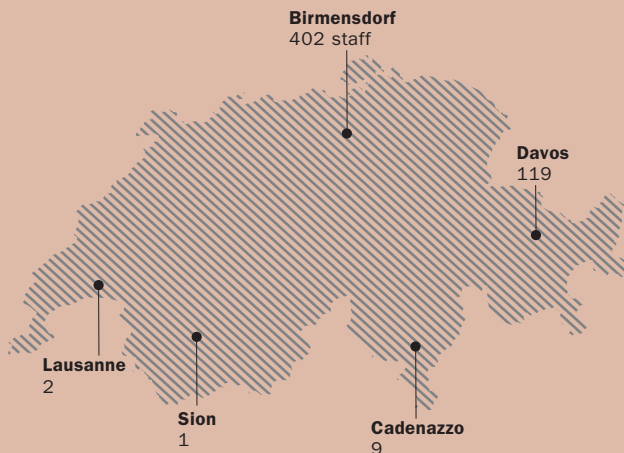
Analysed: Immediate research programme on the summer heat-wave of 2018



Blogged: WSL employees describe everyday research in a "Logbook"

Locations and cooperation

We maintain more than 6000 test, observation and experimental sites, large-scale test facilities and laboratories in all language regions of Switzerland. We also cooperate actively with partners from all over the world.



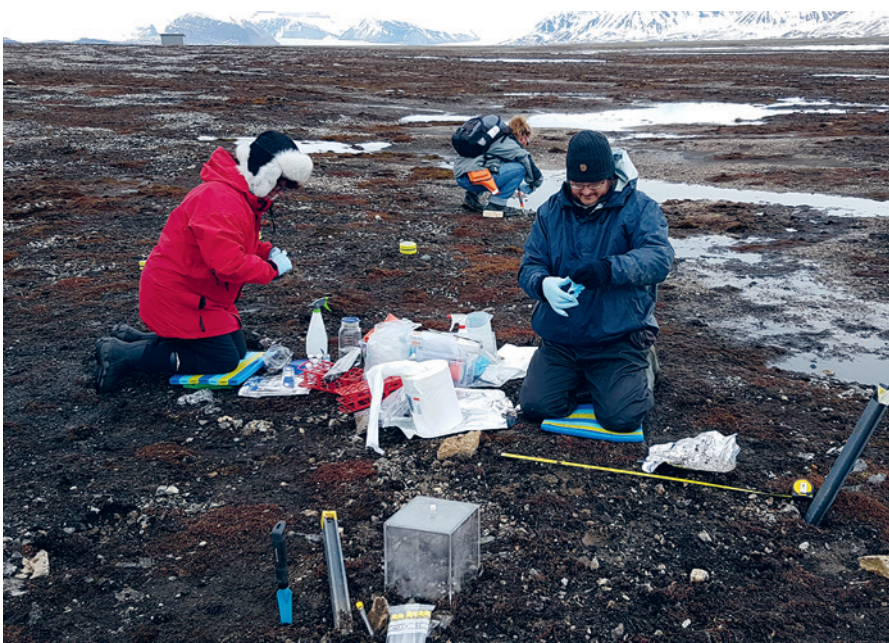
Swiss Federal Institute for Forest, Snow and Landscape Research WSL (wsl.ch)
WSL Institute for Snow and Avalanche Research SLF (slf.ch)
Director: Prof. Dr. Konrad Steffen
WSL is a research institute of the ETH Domain.



Vision and mission

WSL strives for excellence in terrestrial environmental research to provide solutions improving quality of life in a healthy environment.

- We explore the dynamics of the terrestrial environment, as well as the use and protection of natural habitats and cultural landscapes.
- We monitor forests, landscapes, biodiversity, natural hazards and snow and ice.
- We develop sustainable solutions to socially relevant issues together with our partners from science and society.



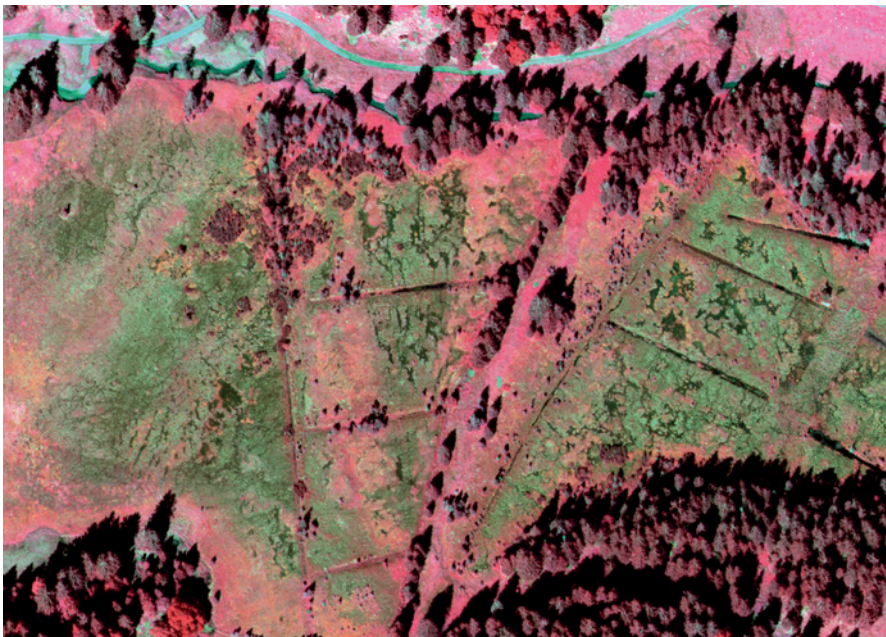
Our focus

We focus on research, the transfer of knowledge and services related to forests, landscapes, biodiversity, natural hazards, snow and ice.

Services for Switzerland

Findings from our research are often relevant for local authorities, specialist centres and the public generally, and are made available to them through, for example:

- The Avalanche Bulletin
- The Swiss National Forest Inventory NFI
- Swiss Forest Protection information platform
- Hydrological forecasts





History

WSL was founded in 1885 as a forest research institute. In 1989, the Federal Institute for Snow and Avalanche Research SLF became part of WSL.

