

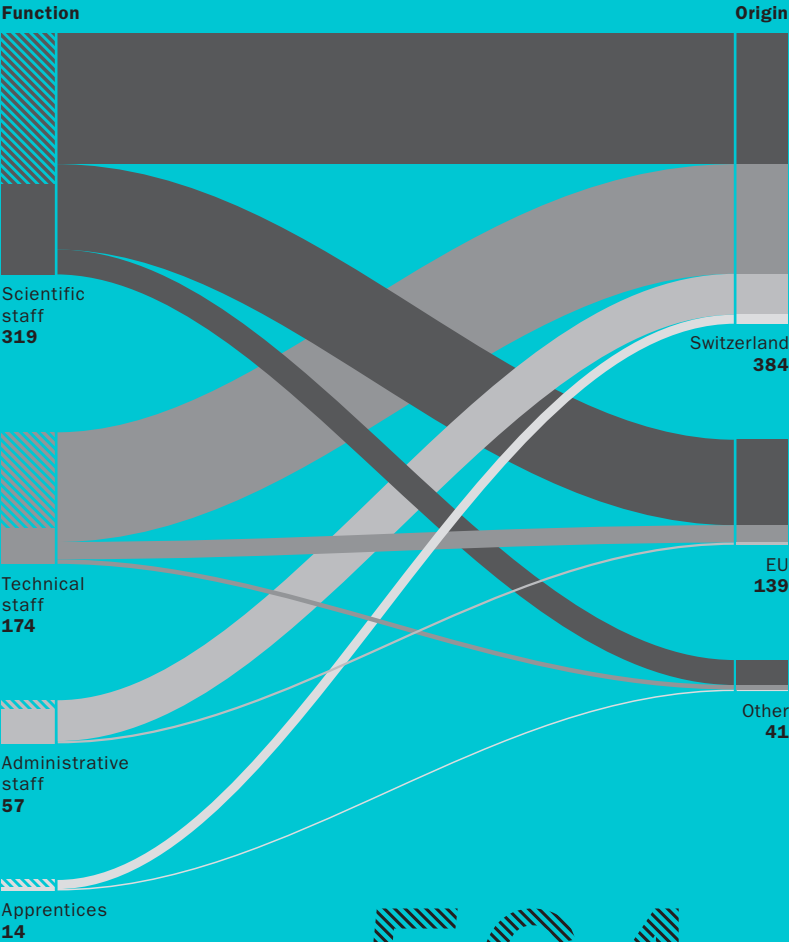
2021

**Swiss Federal Research Institute WSL**

# **Research for People and the Environment**



# Staff



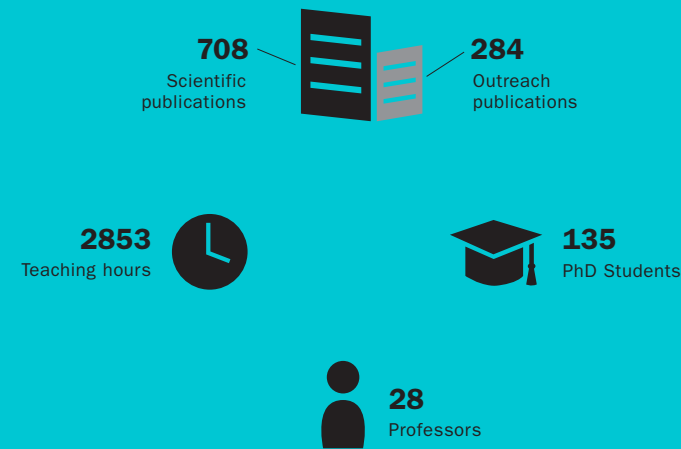
**564**

Total staff

Men  
**61%**  
Women  
**39%**

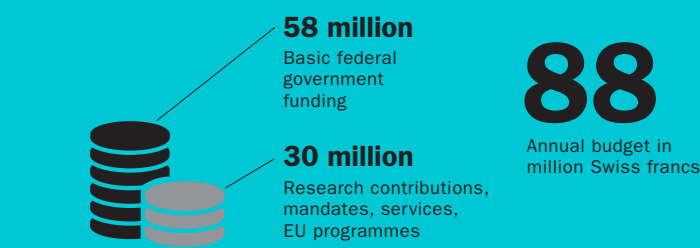
# Knowledge

We generate knowledge about the environment via scientific publications, lectures, the magazine DIAGONAL, information material for specialists as well as events and websites.



# Finances

Our main funding is in the form of a basic contribution from the federal government, with contributions for research from the Swiss National Science Foundation (SNSF), other foundations and the EU, as well as contracts with state and private entities.



# Highlights in 2020



Communicated: How to use the forest and preserve biodiversity



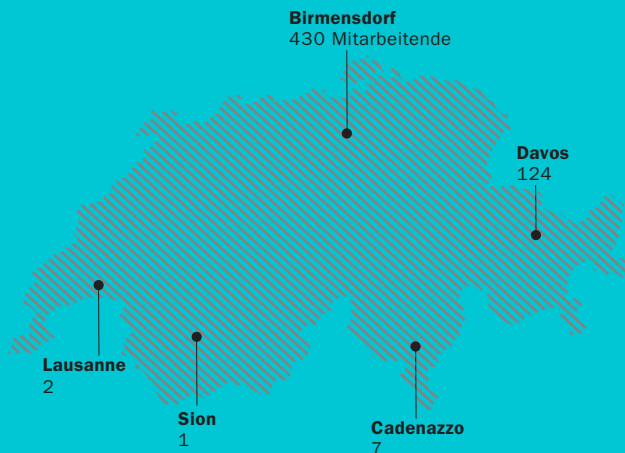
Explored: The Arctic for a year with the MOSAIC polar expedition



Analysed: Energy programme completed. WSL/Eawag initiative promoting land and water biodiversity launched

## Locations and cooperation

We maintain more than 6000 test, observation and experimental sites, large-scale test facilities and laboratories in all language regions of Switzerland. We also cooperate actively with partners from all over the world.



Swiss Federal Institute for Forest, Snow and Landscape Research WSL ([wsl.ch](http://wsl.ch))  
WSL Institute for Snow and Avalanche Research SLF ([slf.ch](http://slf.ch))  
Acting Director: Dr. Christoph Hegg  
WSL is a research institute of the ETH Domain.



## **Vision and mission**

WSL strives for excellence in terrestrial environmental research to provide solutions improving quality of life in a healthy environment.

- We explore the dynamics of the terrestrial environment, as well as the use and protection of natural habitats and cultural landscapes.
- We monitor forests, landscapes, biodiversity, natural hazards and snow and ice.
- We develop sustainable solutions to socially relevant issues together with our partners from science and society.





## **Our focus**

We focus on research, the transfer of knowledge and services related to forests, landscapes, biodiversity, natural hazards, snow and ice.

## **Services for Switzerland**

Findings from our research are often relevant for local authorities, specialist centres and the public generally, and are made available to them through, for example:

- The Avalanche Bulletin
- The Swiss National Forest Inventory NFI
- Swiss Forest Protection information platform
- Hydrological forecasts





## History

WSL was founded in 1885 as a forest research institute. In 1989, the Federal Institute for Snow and Avalanche Research SLF became part of WSL.

It is now 75 years since SLF produced the first Avalanche Bulletin. This has, over the years, been further developed and continually improved.

