

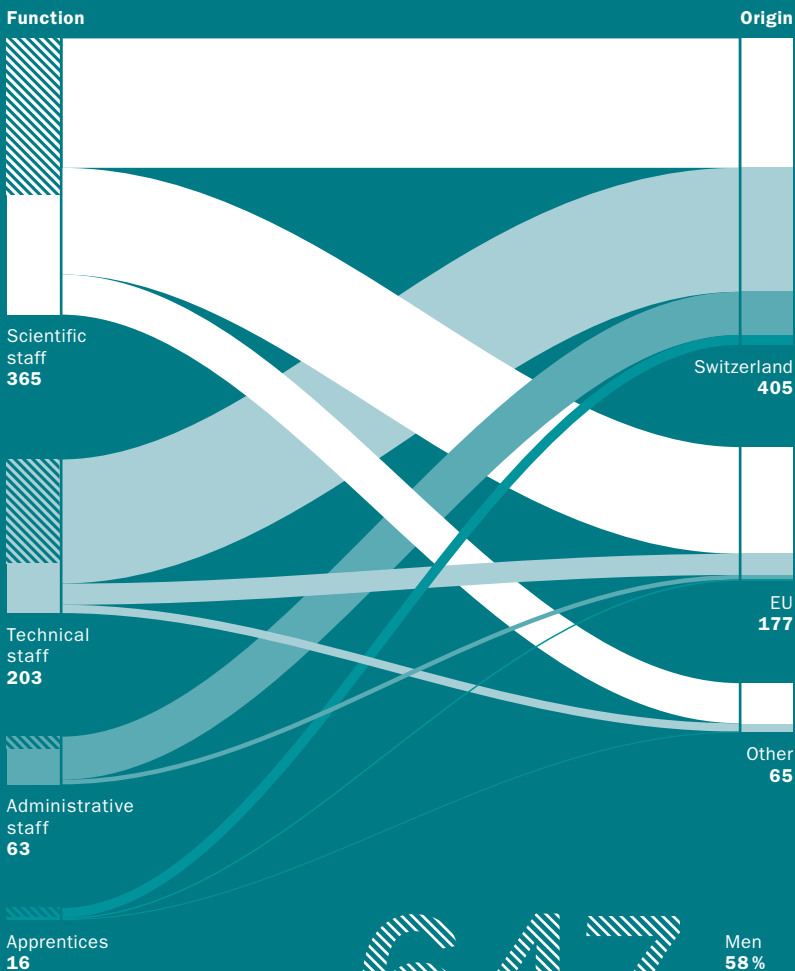
2026

Swiss Federal Research Institute WSL

**Research  
for people  
and the  
environment  
in a changing  
world**



# Staff



**647**

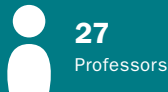
Total staff

Men  
58%

Women  
42%

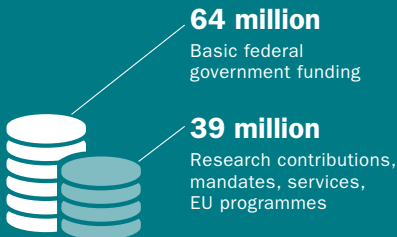
## Knowledge

We generate knowledge about the environment via scientific publications, lectures, the DIAGONAL magazine, information for specialists, events and websites.



## Finances

We are mainly funded through a basic contribution from the federal government, with additional contributions for research from the Swiss National Science Foundation (SNSF), other foundations, and the EU, as well as contracts with state and private entities.



# 103

Annual budget in million Swiss francs

## Highlights in 2025



Completion of research programmes CCAMM and Extremes



WSL soil researcher appointed professor



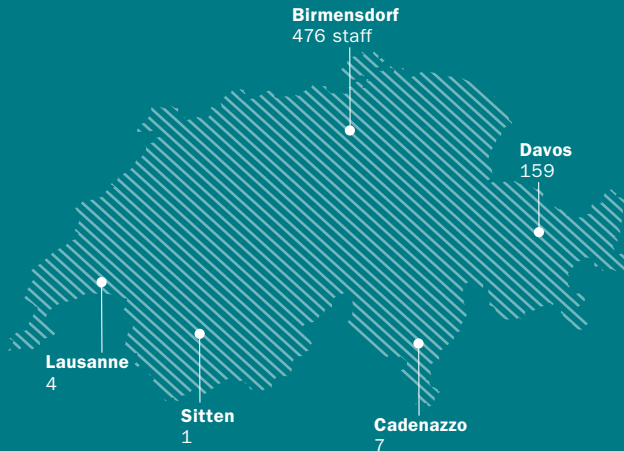
Forests in climate change: new grants



Hiking where others do research. Davos and vicinity

## Locations and cooperations

We maintain more than 6000 test, observation and experimental sites, large-scale test facilities, and laboratories in all language regions of Switzerland. We also cooperate actively with partners from all over the world.



Swiss Federal Institute for Forest, Snow and Landscape Research WSL ([wsl.ch](http://wsl.ch))  
WSL Institute for Snow and Avalanche Research SLF ([slf.ch](http://slf.ch))  
Director: Professor Rolf Holderegger  
WSL is a research institute of the ETH Domain.



WSL performs mission-oriented research as the basis for evidence-driven information for policy-makers and implementation in practice:

- WSL is the leading institute for solution-oriented terrestrial environmental research in Switzerland;
- WSL is the first point of contact for stakeholders on topics related to the terrestrial environment and to the management of natural resources and risks;
- WSL delivers key national services for Switzerland in the fields of forests, landscapes, biodiversity, natural hazards, and snow and ice;
- WSL is a leader in long-term studies and in the monitoring and modelling of environmental systems; it develops and maintains unique infrastructure and data resources.



## **Research for people and the environment in a changing world**

The Swiss Federal Institute for Forest, Snow and Landscape Research WSL provides science-based solutions for forests, landscapes, biodiversity, natural hazards, and snow and ice in a changing world. As a federal research institute and part of the ETH Domain, WSL commits itself to excellence in research and implementation that benefits nature and society.





As the leading Swiss research institute for terrestrial environmental systems, WSL performs outstanding research at the national and international levels that benefits the environment and society in Switzerland and beyond. We address global challenges driven by land-use change, climate change, biodiversity loss, altered biogeochemical cycles, and urbanisation, as well as their interactions. WSL is thus in a position to develop science-based solutions for sustainable approaches that serve both the environment and society. We accomplish this together with partners from research, practice and the public, to effectively support environmental decision-making and governance. To train the next generations of decision-makers, we engage in teaching and continuing education in the field of terrestrial environmental science. Through its activities and engagement with society, WSL bridges the science-policy gap and contributes to a future rooted in sustainability.